

MODEL HCBLM-12 HORIZONTAL CENTRIFUGAL BABBITT LINING MACHINE



Produce motor, turbine, or shaft lined Babbitt bearings more efficiently and economically with the HCBLM-12 model Horizontal Centrifugal Babbitt Lining Machine.

Utilities Required:

*Water: 60gpm @ 40 psi
Electrical: Plant Voltage
3 phase, 50/60 cycle
Air: 40 cfm @ 80 psi
Floor Space: 60 Sq. Ft.*

Larger Machines available for sizes up to 60" Diameter



**TULSA CENTRIFUGAL
CASTING MACHINES, LLC**

**P.O. Box 702751
Tulsa, OK 74170-2751**

**Main Office: 918-585-1400
Fax: 918-779-6085
Email: Sales@centrifugalcasting.com**

TCCM provides the latest in Machine Design Technology using 3D Modeling CAD programs for the production of small and large diameter Babbitt Bearing shells. The Model HCBLM-16 can produce single piece or split shell bearings in sizes ranging from 3" - 12" (75-305 mm) Bearing shell outside diameter, up to 12" (305 mm) long using the Centrifugal Casting process. Low profile and heavy duty enough to handle the load. No special foundation or utilities required.

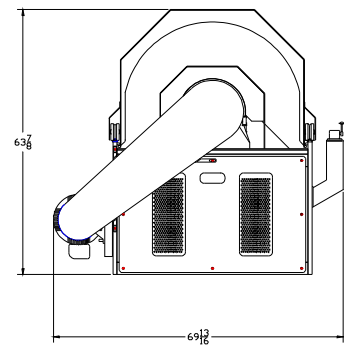
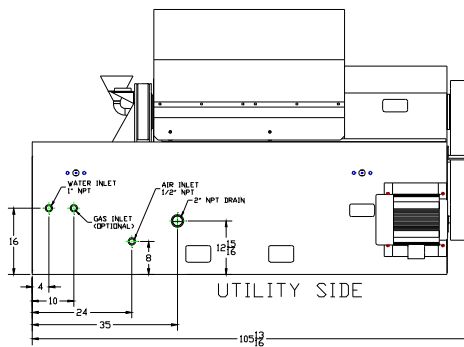
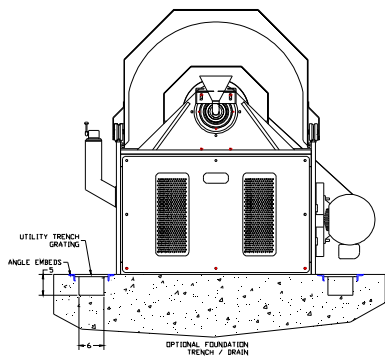
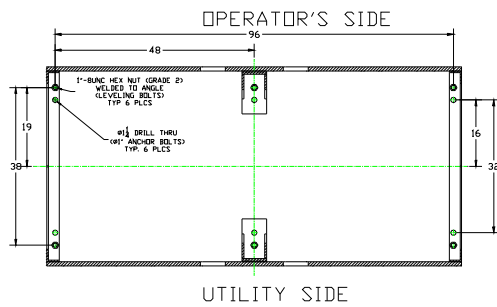
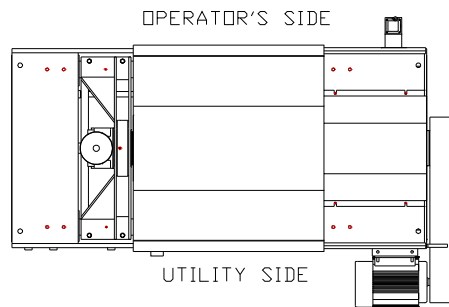
Standard model features:

- Precision Linear clamping bars
- Variable Speed Drive unit with Brake and spin timer
- Adjustable pneumatic clamping with Safety Interlock
- Precision single piece twin bearing Spindle housing assembly
- Precision Idler Spindle housing assembly
- Stainless Steel Runner trough
- Water Cooling assembly with water timer
- Protective cover
- Self contained unit
- Operators control station
- Centrifugal Babbitt Bearing Manual

Ancillary equipment available (Melting pots, furnaces, ladles, etc.)

Call or email for proposal and equipment specifications





EQUIPMENT SPECIFICATIONS

EQUIPMENT CAPACITY

MAX. BEARING O.D.: 12" (305mm) MIN. BEARING O.D.: 3" (76 mm)
 MAX. BEARING LENGTH: 12" (305 mm) MIN. BEARING LENGTH: 2" (50 mm)
 TOTAL LOAD RATING 500 LBS (226 Kgs) (combined weight of fixtures and bearing shell)

UTILITIES:

WATER: 30 GPM @ 40 PSI
 ELECTRICAL: PLANT VOLTAGE, 3 PHASE, 50/60 HZ
 AIR: 40 CFM @ 80 PSI

APPROX. SHIPPING WEIGHT: 3,000 Lbs NET (1360 Kgs) 3,500 Lbs (1588Kgs) GROSS
 DOMESTIC SKID: 110" L X 72" W X 68" H (2.8M X 1.8M X 1.7M)
 EXPORT BOX FOR OCEAN FREIGHT: 114" L X 76" W X 72" H (2.9M X 1.9M X 1.8M)