

## MODEL HCBLM-16 HORIZONTAL CENTRIFUGAL BABBITT LINING MACHINE



Produce motor, turbine, or shaft lined Babbitt bearings more efficiently and economically with the HCBLM-16 model Horizontal Centrifugal Babbitt Lining Machine.

### Utilities Required:

*Water: 60gpm @ 40 psi*

*Electrical: Plant Voltage*

*3 phase, 50/60 cycle*

*Air: 40 cfm @ 80 psi*

*Floor Space: 60 Sq. Ft.*



Larger Machines available  
for sizes up to 60" Diameter

TCCM provides the latest in Machine Design Technology using 3D Modeling CAD programs for the production of small and large diameter Babbitt Bearing shells. The Model HCBLM-16 can produce single piece or split shell bearings in sizes ranging from 3" - 16" (75-406 mm) Bearing shell outside diameter, up to 16" (406 mm) long using the Centrifugal Casting process. Low profile and heavy duty enough to handle the load. No special foundation or utilities required.

### Standard model features:

- Precision Linear clamping bars
- Variable Speed Drive unit with Brake and spin timer
- Adjustable pneumatic clamping with Safety Interlock
- Precision single piece twin bearing Spindle housing assembly
- Precision Idler Spindle housing assembly
- Stainless Steel Runner trough
- Water Cooling assembly with water timer
- Protective cover
- Self contained unit
- Operators control station
- Centrifugal Babbitt Bearing Manual

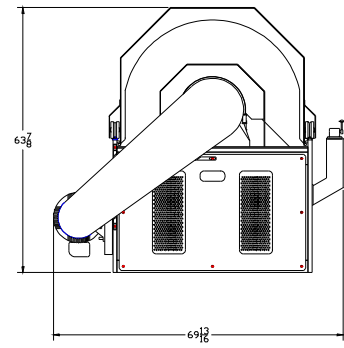
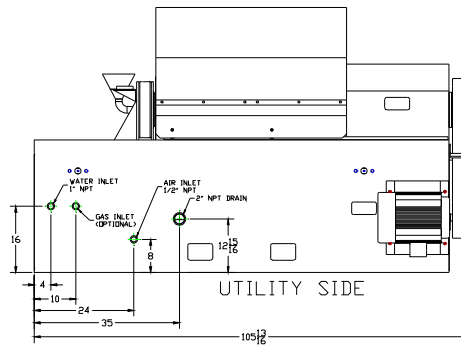
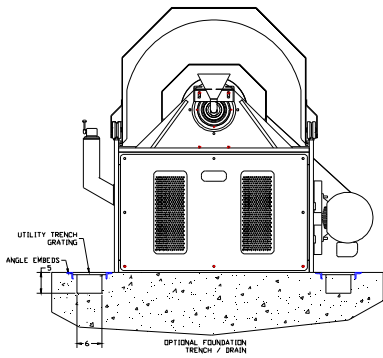
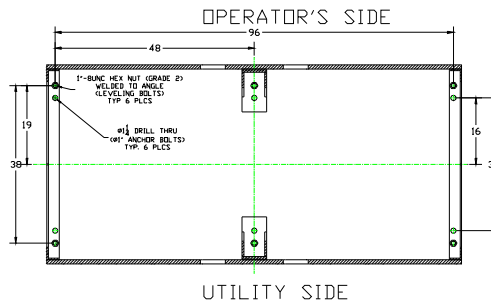
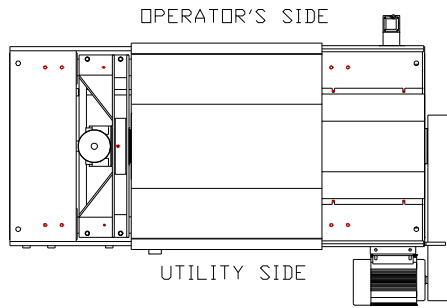
**TULSA CENTRIFUGAL  
CASTING MACHINES, LLC**

**P.O. Box 702751  
Tulsa, OK 74170-2751**

**Main Office: 918-585-1400  
Fax: 918-779-6085  
Email: Sales@centrifugalcasting.com**

Ancillary equipment available (Melting pots, furnaces, ladles, etc.)

*Call or email for proposal and equipment specifications*



### EQUIPMENT SPECIFICATIONS

#### EQUIPMENT CAPACITY

MAX. BEARING O.D.: 16" (406mm)      MIN. BEARING O.D.: 3" (76 mm)  
 MAX. BEARING LENGTH: 16" (406 mm)      MIN. BEARING LENGTH: 2" (50 mm)  
 TOTAL LOAD RATING 1,500 LBS (680 Kgs) (combined weights of fixtures and bearing shell)

#### UTILITIES:

WATER: 30 GPM @ 40 PSI  
 ELECTRICAL: PLANT VOLTAGE, 3 PHASE, 50/60 HZ  
 AIR: 40 CFM @ 80 PSI

APPROX. SHIPPING WEIGHT: 3,000 Lbs NET (1360 Kgs) 3,500 Lbs (1588Kgs) GROSS  
 DOMESTIC SKID: 110" L X 72" W X 68" H (2.8M X 1.8M X 1.7M)  
 EXPORT BOX FOR OCEAN FREIGHT: 114" L X 76" W X 72" H (2.9M X 1.9M X 1.8M)