

TULSA CENTRIFUGAL CASTING MACHINES LLC

Horizontal Centrifugal Casting Machines 30K series

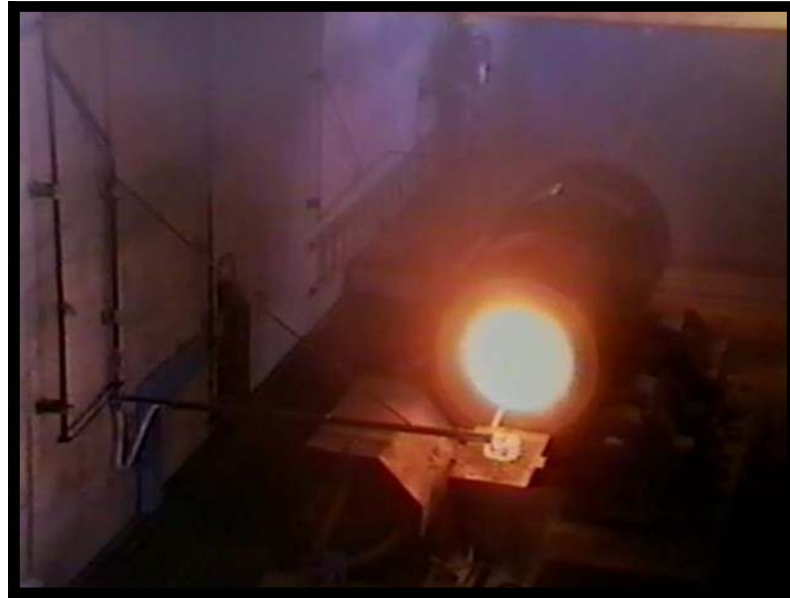
Centrifugal Casting Machines for the Foundry Industry

The Model 30K Series Horizontal Centrifugal casting machines are designed to produce a variety of ferrous and non-ferrous castings.

Castings produced in a horizontal axis approach 100% material yield and requires no gates or risers producing a "True Centrifugal" casting.

These trunnion type machines utilize permanent steel molds or sand lined flasks.

Mold designs, operating procedures, speeds, and centrifugal casting procedures are included.



Types of castings that can be produced:

- Steel Mill Rolls
- Forming Rolls
- Extrusion Billets
- Bi-Metal Rolls
- Alloy Tubes
- Reformer Tubes

TULSA CENTRIFUGAL CASTING MACHINES LLC

P.O. Box
702751
Tulsa, OK 74170-2751

Phone: 918-585-1400 Fax: 918-779-6085
Email: sales@centrifugalcasting.com

Model 30K Specifications

Maximum Mold Diameter: 36" [914 mm] Minimum Mold Diameter: 8 1/2" [216 mm]
Maximum Casting Length: 20 Feet [6M]

Maximum Load Rating 30,000 lbs [13,607 kgs]

Standard Equipment:

Main Spinner Assembly with Cast Iron Pillow Blocks
Mold Water Cooling Manifold Assembly
Mold Heating Manifold Assembly
Pour Car Assembly with adjustable height runner pot and protective over
Semi Automatic Spray Assembly