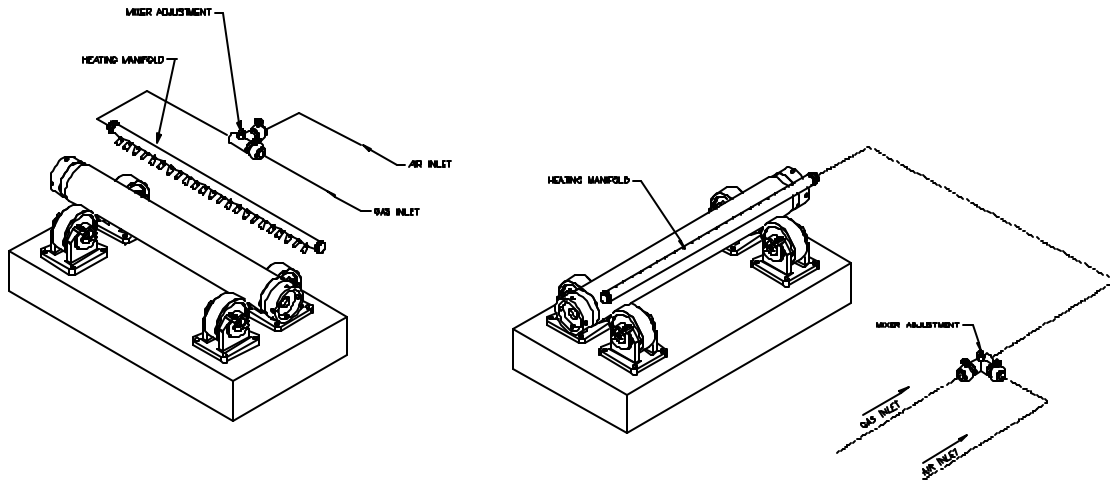


Tulsa Centrifugal Casting Machines, LLC



Typical Mold Heating Assembly Horizontal or Vertical Centrifugal Casting Machines



Tulsa Centrifugal Casting Machines, LLC designs mold preheating assemblies for both Horizontal and Vertical Centrifugal Casting Machines. The above simulated assembly is typical of a manifold style mold preheater used for a horizontal application with medium to long length molds. The manifold diameter and length is based on the mold size to be heated.

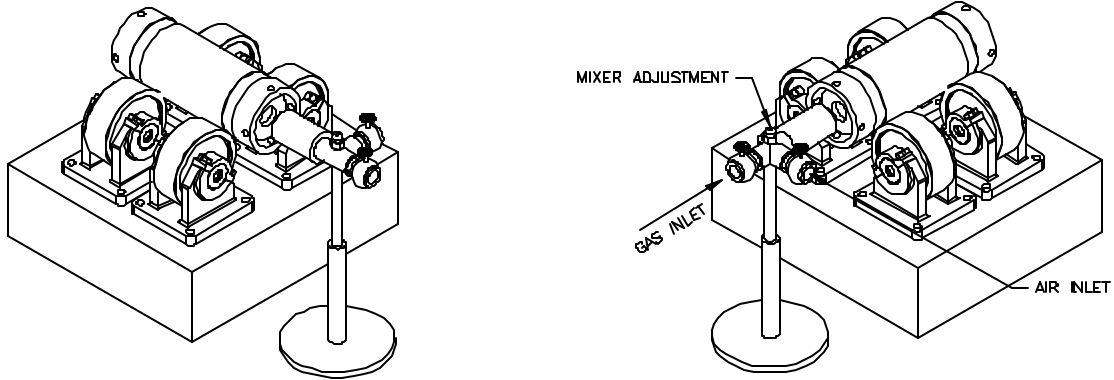
All Horizontal and Vertical Mold assemblies come standard with the following

- Manifold with Cap and swivel union connection
- Bronze Heater Nozzles with bushings
- Adjustable Air/Gas Mixing tee with valves
- Fabricated Heating Manifold stand (adjustable)

The customer will be required to supply the necessary piping to the Mixer and from the Mixer to the Heating assembly (shown as phantom lines in drawing)

Tulsa Centrifugal Casting Machines, LLC

Single stand type heaters are used for shorter length molds where the Air/Gas mixing tee assembly is built into the unit and the flame placed directly into the bore of the mold.



These single nozzle burners are adjustable in height to meet the full range of mold sizes specified for the machine.

In a Vertical Mold application, the heater stand can have a pivot head allowing the flame to rotate and be directed more towards the center of the mold. This type of burner stand is more common with the Portable Vertical Centrifugal Casting Machine Model VP500 or VP1000.



Model VP500 or VP 1000