



## VP SERIES VERTICAL CENTRIFUGAL CASTING MACHINES

The Model VP Series of Vertical Centrifugal Casting machines are ideally suited for the production of ferrous or non ferrous castings using permanent steel molds, sand lined flasks, or graphite molds.

Economical to operate and no special foundations are required for standard models.

Each standard unit is self contained and requires no special skills to operate.

### Model VP500

Machine Capacity:

Max. Mold Table Dia: 24" (610 mm)

Max. Mold Height: 12" (305 mm)

Balanced Load: 500 # (227 kgs)



### Model VP1000

Machine Capacity:

Max. Mold Table Dia: 28" (711 mm)

Max. Mold Height: 14" (356 mm)

Balanced Load: 800 # (363 kgs)



### Model VP1200

Machine Capacity:

Max. Mold Table Dia: 30" (762 mm)

Max. Mold Height: 18" (457 mm)

Balanced Load: 1200 # (544 kgs)

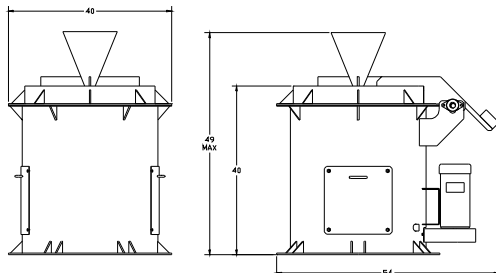
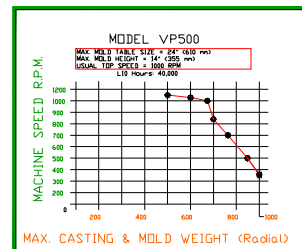
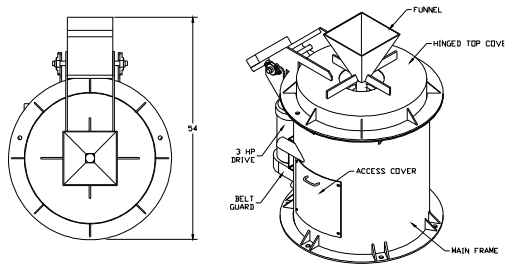


### Standard Features

- Electronically controlled variable speed drive unit
- Remote mounted drive controller
- Operators Control Stand
- Mold Water Cooling Manifold w/ Solenoid Valve
- Mold Heater Manifold w/ Air/Gas mixing tee assembly
- Pouring Funnel
- Mold Adapter Table
- Extractor Tongs
- Spray wash gun
- Sample of Centrifugal Mold Wash

Tulsa Centrifugal Casting Machines LLC  
P.O. Box 702751, Tulsa, OK 74170-2751  
U.S.A.

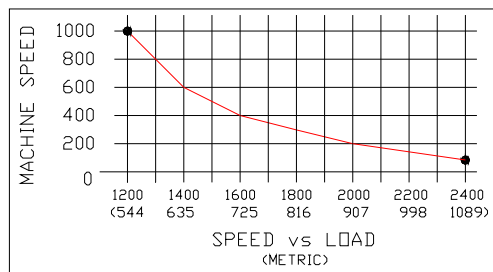
Phone (918) 585-1400 Fax: (918) 779-6085  
E-mail: [sales@centrifugalcasting.com](mailto:sales@centrifugalcasting.com)  
Web: [www.centrifugalcasting.com](http://www.centrifugalcasting.com)



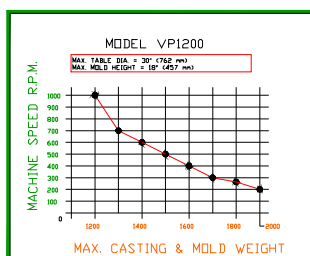
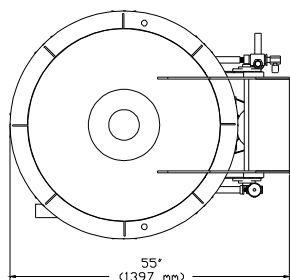
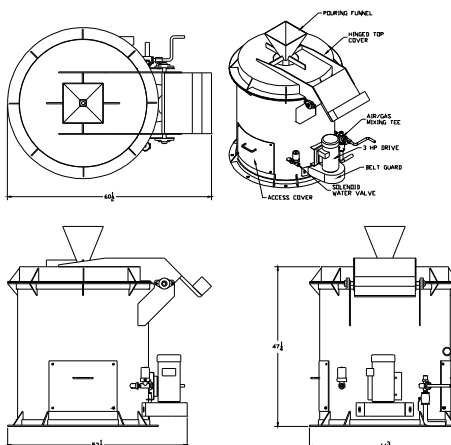
\*\*\*ALL DIMENSIONS ARE INCHES

MODEL VP500  
UTILITY REQUIREMENTS

- \*3 HP (2.2KW) REGENERATIVE DRIVE
- 230 VOLT, 1 PHASE, 50/60 HZ
- AIR - 20 CFM @ 80 PSI (MOLD SPRAY)
- WATER - 20 GPM @ 40 PSI (MOLD COOLING)
- WATER - 5 GPM @ 40 PSI (OPTIONAL SHAFT COOLING)
- GAS - 1.8 CFM @ 0.4 PSI (MOLD HEATING)



MODEL VP1000  
SPACE REQUIREMENTS



VP SERIES DATA FOR EACH MODEL IS GENERAL AND SUBJECT TO CHANGE

SPECIAL REQUIREMENTS SHOULD BE ADDRESSED DIRECTLY TO TULSA CENTRIFUGAL CASTING MACHINES ENGINEERING DEPARTMENT.

