



# Model VP-1500 Vertical Centrifugal Casting Machine

Tulsa Centrifugal Casting Machines, LLC

Model VP-1500 Vertical  
Portable Centrifugal  
Casting Machine for the  
production of ferrous or  
non-ferrous castings.

Capable of spinning up  
to 75 G force on the  
metal being cast.

Standard Features:

5 HP Motor (DC Regen-  
erative Drive)

Mold Water Cooling

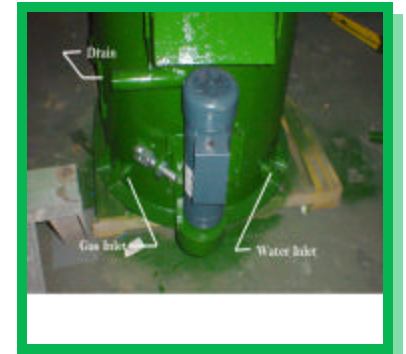
Mold Heater

Pouring Funnel

32" Adapter Table

Operators Controls

Mold Wash Spray Gun



**Maximum Mold Adapter Table Diameter: 32" x 1 1/8" (813 x 29 mm)**

**Maximum Mold Height: 18" (457 mm)**

**Maximum Speed: 750 RPM**

**No special foundations required**

Tulsa Centrifugal Casting Machines, LLC

P.O. Box 702751

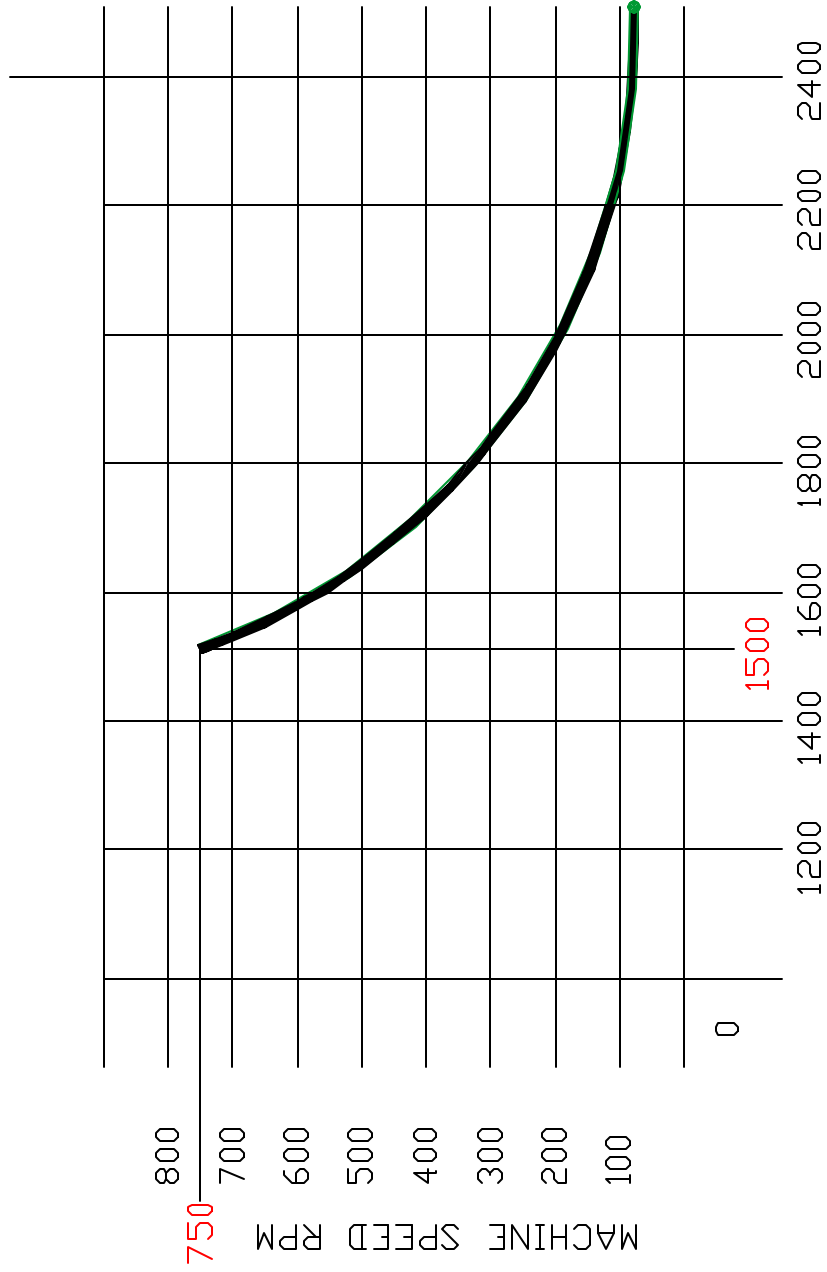
Tulsa, OK 74170-2751

Main Office: 918-585-1400 Fax: 918-251-3310

Email: [sales@centrifugalcasting.com](mailto:sales@centrifugalcasting.com)

Web: [www.centrifugalcasting.com](http://www.centrifugalcasting.com)

# MODEL VP1500 SPEED VS LOAD CHART



MAX. CASTING & MOLD WEIGHT (LBS)